



BCT[®]

Bulge Control Technology

Beyond Rivet Nuts



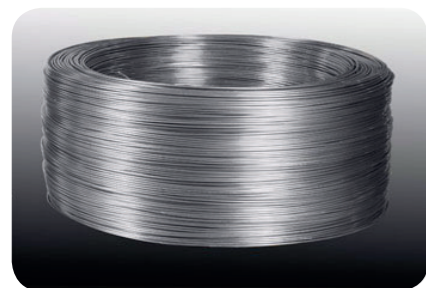
Catalogue

BBA srl

Via Dell'Industria, 38
I-63076 Centobuchi
di Montepandone (AP) - Italy

+39 0735 714056
@ info@bbafasteners.com
www.bbafasteners.com

MATERIALS



We produce Blind Rivet Nuts in various materials

Please always state quality standard of screw which is intended to be used with the blind nut

Aluminium
AlMg 3.5
Metric Class <5.6

Stainless
A2 1.4567
Metric Class 50

Stainless
A4 1.4578
Metric Class 50

Steel
T-Material 480 N/mm²
according to screws Metric Class 8.8

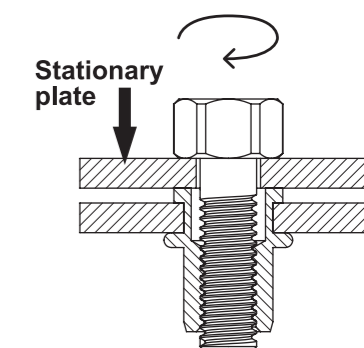
Steel
C-Material 600 N/mm²
according to screws Metric Class 10.9

Steel
T-Material special treatment (BBA H-spec)
according to screws Metric Class 12.9

RESISTANCE VALUES

Assembly Torques

	STEEL BBA T-spec Torque	STEEL BBA C-spec Torque	STEEL BBA H-spec Torque
M5	5,9	8,6	10,0
M6	10,1	14,9	17,4
M8	24,6	36,1	42,2
M10	48,0	71,0	83,0
M12	84,0	123,0	144,0



	Stainless STEEL A2 1.4567 Torque	Stainless STEEL A4 1.4578 Torque
M5	According to Bolt Metric Class 50	According to Bolt Metric Class 50
M6		
M8		
M10		
M12		

BBA standard is T-spec and is stock item

Test must always be performed on actual application components before the fastener is specified.



BULGE CONTROL

Ideal for composite and plastic materials where traditional rivet nuts risk deforming or cracking the sheet material. These products produce an 'XL' bulge diameter that is engineered to always form behind the sheet, avoiding radial expansion within the sheet. Due to the large bulge diameter, this series is also suitable to be used in irregular, oversized or even slotted holes.

MULTIGRIP

Offers a greatly extended grip capability compared to standard rivet nuts, allowing total versatility to the user. For class 8.8 bolt performance.

HIGH STRENGTH

Provides product performance achieving tightening torque loads consistent with class 12.9 bolts. Products retains pre tension of bolt, avoiding secondary tightening procedures.

MICRO

For use in areas where there is restricted rear sheet clearance (before or after installation), while still offering product performance consistent with class 8.8 bolts. Can be used in sheet material, box section and also tube.

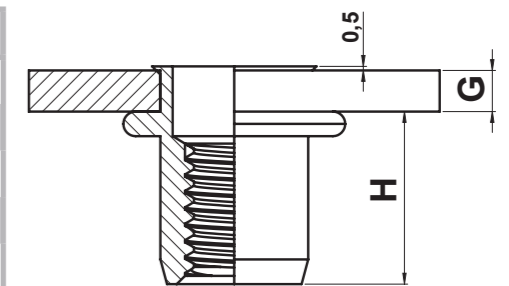


HOW TO CREATE OUR PART NUMBER

1. Select the material and choose the corresponding letter



BCT®- Bulge controlled		
T	=	steel
E	=	stainless steel A2
V	=	stainless steel A4
A	=	aluminum
B	=	brass



2. Replace the (X) with the selected material



Thread	Grip	ØF	ød	L	øD	S	H	Part number
M4	0,5-1,5	7,0	6,97	13,5	8,0	0,5	8,0	(x) 4M-040.25TS
	1,5-2,5	7,0	6,97	14,0	8,0	0,5	8,0	(x) 4M-045.32TS
	2,5-3,5	7,0	6,97	15,0	8,0	0,5	8,0	(x) 4M-055.42TS
	3,5-4,5	7,0	6,97	16,0	8,0	0,5	8,0	(x) 4M-065.52TS
	4,5-5,5	7,0	6,97	17,0	8,0	0,5	8,0	(x) 4M-075.62TS

3. An example of a complete part number

T4M-040.25TS

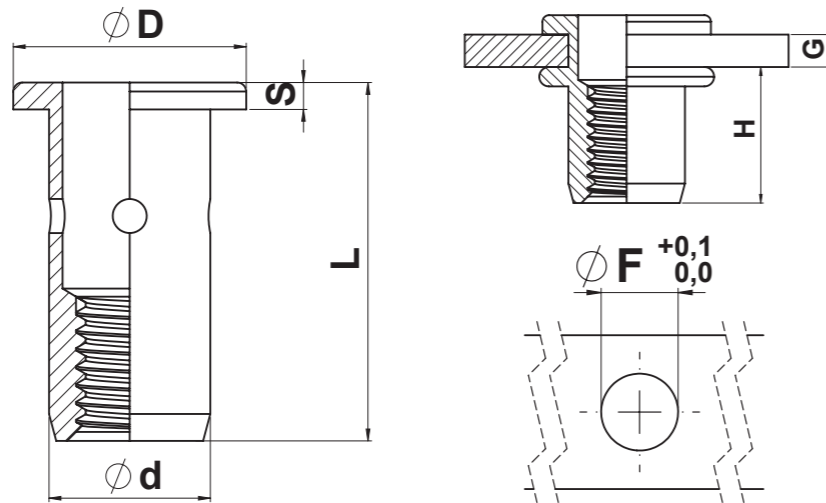
BCT®- Bulge Controlled

Ideal for composite and plastic materials where traditional rivet nuts risk deforming or cracking the sheet material. These products produce an 'XL' bulge diameter that is engineered to always form behind the sheet, avoiding radial expansion within the sheet. Due to the large bulge diameter, this series is also suitable to be used in irregular, oversized or even slotted holes.

Large flange head
Round body plain
Open end

Available in materials

T = steel
E = stainless steel A2
V = stainless steel A4
A = aluminum
B = brass



Thread	Grip	ØF	ød	L	øD	S	H	Part number
M4	0,5-1,5	7,0	6,97	14,0	10,0	0,8	8,0	(x)4M-040.25LF
	1,5-2,5	7,0	6,97	14,5	10,0	0,8	8,0	(x)4M-045.32LF
	2,5-3,5	7,0	6,97	15,5	10,0	0,8	8,0	(x)4M-055.42LF
	3,5-4,5	7,0	6,97	16,5	10,0	0,8	8,0	(x)4M-065.52LF
	4,5-5,5	7,0	6,97	17,5	10,0	0,8	8,0	(x)4M-075.62LF
M5	0,5-2,0	8,0	7,97	17,0	11,0	1,0	9,5	(x)5M-050.29LF
	2,0-3,0	8,0	7,97	18,0	11,0	1,0	10,0	(x)5M-055.40LF
	3,0-4,0	8,0	7,97	19,0	11,0	1,0	10,0	(x)5M-065.50LF
	4,0-5,0	8,0	7,97	20,0	11,0	1,0	10,0	(x)5M-075.60LF
M6	0,5-2,5	9,0	8,97	19,5	13,0	1,5	10,5	(x)6M-060.33LF
	2,5-4,0	9,0	8,97	20,0	13,0	1,5	10,5	(x)6M-065.50LF
	4,0-5,5	9,0	8,97	21,5	13,0	1,5	10,5	(x)6M-080.66LF
	5,5-7,0	9,0	8,97	23,0	13,0	1,5	10,5	(x)6M-095.80LF
M8	1,0-3,0	11,0	10,97	20,5	16,0	1,5	12,5	(x)8M-060.43LF
	3,0-5,0	11,0	10,97	24,0	16,0	1,5	12,5	(x)8M-090.62LF
	4,5-6,5	11,0	10,97	26,0	16,0	1,5	12,5	(x)8M-110.77LF
	6,5-8,5	11,0	10,97	28,0	16,0	1,5	12,5	(x)8M-130.97LF
M10	1,0-3,5	13,0	12,97	26,0	19,0	2,0	15,5	(x)10M-070.50LF
	3,5-6,0	13,0	12,97	29,0	19,0	2,0	15,5	(x)10M-100.75LF
	6,0-8,5	13,0	12,97	34,0	19,0	2,0	16,5	(x)10M-140.100LF

All dimensions in metric. Steel Material Zinc Plating (A3K ISO4042 + thickness 8-12 micron Iridescent White Passivation (RoHS conform) high resistance (min 120h WR). Other coatings are available on request. Technical variations reserved.

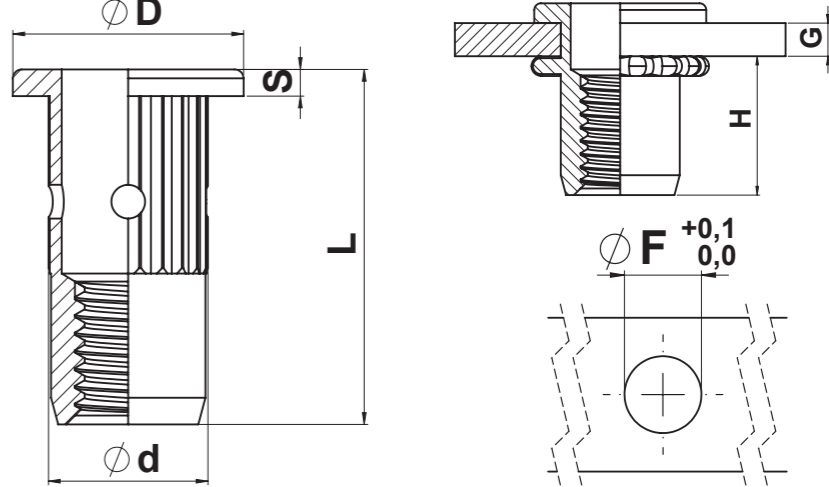
BCT®- Bulge Controlled

Ideal for composite and plastic materials where traditional rivet nuts risk deforming or cracking the sheet material. These products produce an 'XL' bulge diameter that is engineered to always form behind the sheet, avoiding radial expansion within the sheet. Due to the large bulge diameter, this series is also suitable to be used in irregular, oversized or even slotted holes.

Large flange head
Round body knurled
Open end

Available in materials

T = steel
E = stainless steel A2
V = stainless steel A4
A = aluminum
B = brass



Thread	Grip	ØF	ød	L	øD	S	H	Part number
M4	0,5-1,5	7,0	6,97	14,0	10,0	0,8	8,0	(x)4M-040.25LF/KN
	1,5-2,5	7,0	6,97	14,5	10,0	0,8	8,0	(x)4M-045.32LF/KN
	2,5-3,5	7,0	6,97	15,5	10,0	0,8	8,0	(x)4M-055.42LF/KN
	3,5-4,5	7,0	6,97	16,5	10,0	0,8	8,0	(x)4M-065.52LF/KN
	4,5-5,5	7,0	6,97	17,5	10,0	0,8	8,0	(x)4M-075.62LF/KN
M5	0,5-2,0	8,0	7,97	17,0	11,0	1,0	9,5	(x)5M-050.29LF/KN
	2,0-3,0	8,0	7,97	18,0	11,0	1,0	10,0	(x)5M-055.40LF/KN
	3,0-4,0	8,0	7,97	19,0	11,0	1,0	10,0	(x)5M-065.50LF/KN
	4,0-5,0	8,0	7,97	20,0	11,0	1,0	10,0	(x)5M-075.60LF/KN
M6	0,5-2,5	9,0	8,97	19,5	13,0	1,5	10,5	(x)6M-060.33LF/KN
	2,5-4,0	9,0	8,97	20,0	13,0	1,5	10,5	(x)6M-065.50LF/KN
	4,0-5,5	9,0	8,97	21,5	13,0	1,5	10,5	(x)6M-080.66LF/KN
	5,5-7,0	9,0	8,97	23,0	13,0	1,5	10,5	(x)6M-095.80LF/KN
M8	1,0-3,0	11,0	10,97	20,5	16,0	1,5	12,5	(x)8M-060.43LF/KN
	3,0-5,0	11,0	10,97	24,0	16,0	1,5	12,5	(x)8M-090.62LF/KN
	4,5-6,5	11,0	10,97	26,0	16,0	1,5	12,5	(x)8M-110.77LF/KN
	6,5-8,5	11,0	10,97	28,0	16,0	1,5	12,5	(x)8M-130.97LF/KN
M10	1,0-3,5	13,0	12,97	26,0	19,0	2,0	15,5	(x)10M-070.50LF/KN
	3,5-6,0	13,0	12,97	29,0	19,0	2,0	15,5	(x)10M-100.75LF/KN
	6,0-8,5	13,0	12,97	34,0	19,0	2,0	16,5	(x)10M-140.100LF/KN

All dimensions in metric. Steel Material Zinc Plating (A3K ISO4042 + thickness 8-12 micron Iridescent White Passivation (RoHS conform) high resistance (min 120h WR). Other coatings are available on request. Technical variations reserved.

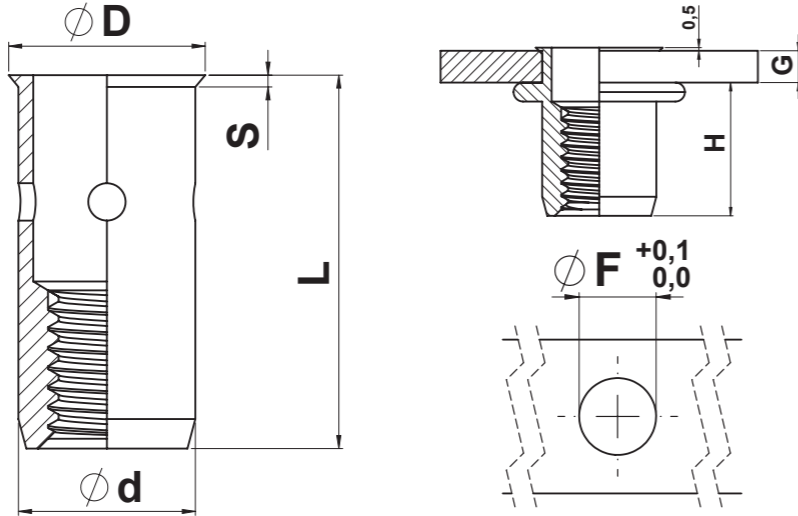
BCT®- Bulge Controlled

Ideal for composite and plastic materials where traditional rivet nuts risk deforming or cracking the sheet material. These products produce an 'XL' bulge diameter that is engineered to always form behind the sheet, avoiding radial expansion within the sheet. Due to the large bulge diameter, this series is also suitable to be used in irregular, oversized or even slotted holes.

Small countersunk head
Round body plain
Open end

Available in materials

T = steel
E = stainless steel A2
V = stainless steel A4
A = aluminum
B = brass



Thread	Grip	ØF	Ød	L	ØD	S	H	Part number
M4	0,5-1,5	7,0	6,97	13,5	8,0	0,5	8,0	(x)4M-040.25TS
	1,5-2,5	7,0	6,97	14,0	8,0	0,5	8,0	(x)4M-045.32TS
	2,5-3,5	7,0	6,97	15,0	8,0	0,5	8,0	(x)4M-055.42TS
	3,5-4,5	7,0	6,97	16,0	8,0	0,5	8,0	(x)4M-065.52TS
	4,5-5,5	7,0	6,97	17,0	8,0	0,5	8,0	(x)4M-075.62TS
M5	0,5-2,0	8,0	7,97	16,0	9,0	0,5	9,5	(x)5M-050.29TS
	2,0-3,0	8,0	7,97	17,0	9,0	0,5	9,5	(x)5M-055.40TS
	3,0-4,0	8,0	7,97	18,0	9,0	0,5	9,5	(x)5M-065.50TS
	4,0-5,0	8,0	7,97	19,0	9,0	0,5	9,5	(x)5M-075.60TS
M6	0,5-2,5	9,0	8,97	17,5	10,0	0,5	10,5	(x)6M-060.33TS
	2,5-4,0	9,0	8,97	19,0	10,0	0,5	10,5	(x)6M-065.50TS
	4,0-5,5	9,0	8,97	20,5	10,0	0,5	10,5	(x)6M-080.64TS
	5,5-7,0	9,0	8,97	22,0	10,0	0,5	10,5	(x)6M-095.80TS
M8	1,0-3,0	11,0	10,97	19,5	12,0	0,6	12,5	(x)8M-060.41TS
	3,0-5,0	11,0	10,97	23,0	12,0	0,6	12,5	(x)8M-090.60TS
	4,5-6,5	11,0	10,97	24,0	12,0	0,6	12,5	(x)8M-100.74TS
	6,0-8,0	11,0	10,97	27,0	12,0	0,6	12,5	(x)8M-130.88TS
M10	1,0-3,5	13,0	12,97	25,0	14,0	0,6	16,0	(x)10M-070.48TS
	3,5-6,0	13,0	12,97	28,0	14,0	0,6	16,5	(x)10M-095.73TS
	6,0-8,5	13,0	12,97	32,0	14,0	0,6	16,5	(x)10M-140.98TS

All dimensions in metric. Steel Material Zinc Plating (A3K ISO4042 + thickness 8-12 micron Iridescent White Passivation (RoHS conform) high resistance (min 120h WR). Other coatings are available on request. Technical variations reserved.

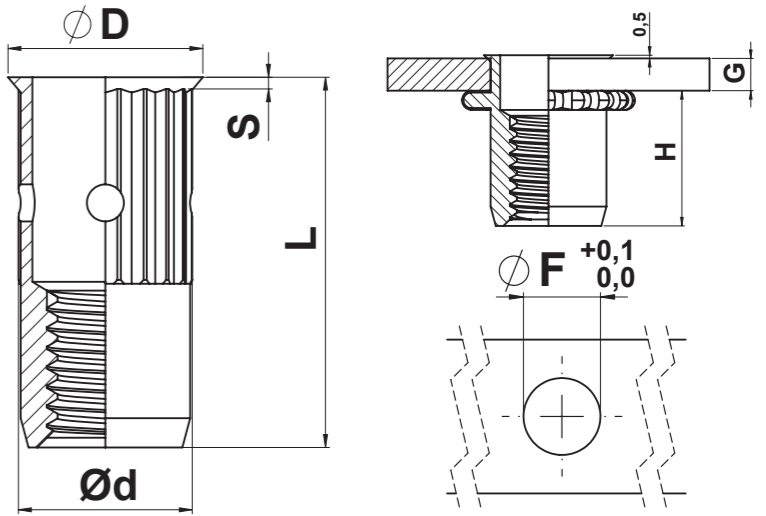
BCT®- Bulge Controlled

Ideal for composite and plastic materials where traditional rivet nuts risk deforming or cracking the sheet material. These products produce an 'XL' bulge diameter that is engineered to always form behind the sheet, avoiding radial expansion within the sheet. Due to the large bulge diameter, this series is also suitable to be used in irregular, oversized or even slotted holes.

Small countersunk head
Round body knurled
Open end

Available in materials

T = steel
E = stainless steel A2
V = stainless steel A4
A = aluminum
B = brass



Thread	Grip	ØF	Ød	L	ØD	S	H	Part number
M4	0,5-1,5	7,0	6,97	13,5	8,0	0,5	8,0	(x)4M-040.25TS/KN
	1,5-2,5	7,0	6,97	14,0	8,0	0,5	8,0	(x)4M-045.32TS/KN
	2,5-3,5	7,0	6,97	15,0	8,0	0,5	8,0	(x)4M-055.42TS/KN
	3,5-4,5	7,0	6,97	16,0	8,0	0,5	8,0	(x)4M-065.52TS/KN
	4,5-5,5	7,0	6,97	17,0	8,0	0,5	8,0	(x)4M-075.62TS/KN
M5	0,5-2,0	8,0	7,97	16,0	9,0	0,5	9,5	(x)5M-050.29TS/KN
	2,0-3,0	8,0	7,97	17,0	9,0	0,5	9,5	(x)5M-055.40TS/KN
	3,0-4,0	8,0	7,97	18,0	9,0	0,5	9,5	(x)5M-065.50TS/KN
	4,0-5,0	8,0	7,97	19,0	9,0	0,5	9,5	(x)5M-075.60TS/KN
M6	0,5-2,5	9,0	8,97	17,5	10,0	0,5	10,5	(x)6M-060.33TS/KN
	2,5-4,0	9,0	8,97	19,0	10,0	0,5	10,5	(x)6M-065.50TS/KN
	4,0-5,5	9,0	8,97	20,5	10,0	0,5	10,5	(x)6M-080.64TS/KN
	5,5-7,0	9,0	8,97	22,0	10,0	0,5	10,5	(x)6M-095.80TS/KN
M8	1,0-3,0	11,0	10,97	19,5	12,0	0,6	12,5	(x)8M-060.41TS/KN
	3,0-5,0	11,0	10,97	23,0	12,0	0,6	12,5	(x)8M-090.60TS/KN
	4,5-6,5	11,0	10,97	24,0	12,0	0,6	12,5	(x)8M-100.74TS/KN
	6,0-8,0	11,0	10,97	27,0	12,0	0,6	12,5	(x)8M-130.88TS/KN
M10	1,0-3,5	13,0	12,97	25,0	14,0	0,6	16,0	(x)10M-070.48TS/KN
	3,5-6,0	13,0	12,97	28,0	14,0	0,6	16,5	(x)10M-095.73TS/KN
	6,0-8,5	13,0	12,97	32,0	14,0	0,6	16,5	(x)10M-140.98TS/KN

All dimensions in metric. Steel Material Zinc Plating (A3K ISO4042 + thickness 8-12 micron Iridescent White Passivation (RoHS conform) high resistance (min 120h WR). Other coatings are available on request. Technical variations reserved.

BCT®- Multigrip

Offers a greatly extended grip capability compared to standard rivet nuts, allowing total versatility to the user. For class 8.8 bolt performance.

Large flange head

Round body plain

Open end

Available in materials

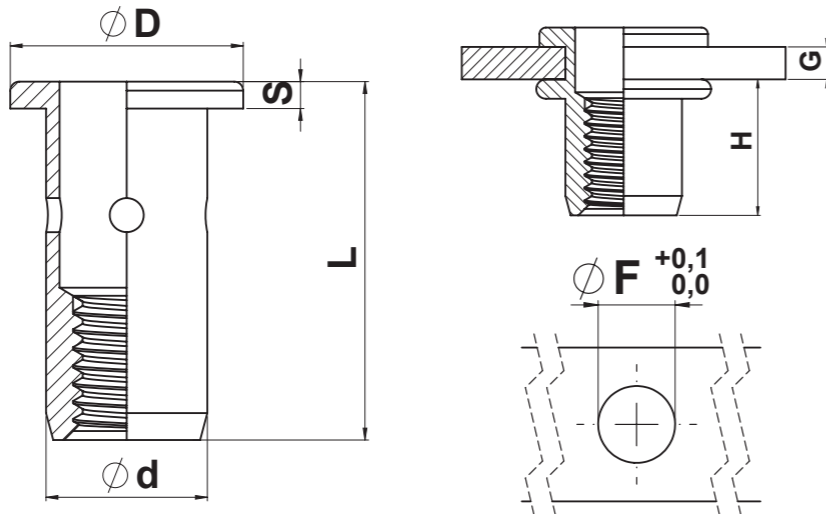
T = steel

E = stainless steel A2

V = stainless steel A4

A = aluminum

B = brass



Thread	Grip	ØF	ød	L	øD	S	H	Part number
M4	0,5-4,0	7,0	6,97	14,0	10,0	0,8	8,0	(x)4M-040.25LF
	2,5-5,5	7,0	6,97	15,5	10,0	0,8	8,0	(x)4M-055.37LF
	4,0-7,0	7,0	6,97	17,0	10,0	0,8	8,0	(x)4M-070.49LF
M5	0,5-5,0	8,0	7,97	17,0	11,0	1,0	9,5	(x)5M-050.29LF
	3,0-7,0	8,0	7,97	19,0	11,0	1,0	9,5	(x)5M-070.43LF
M6	0,5-4,5	9,0	8,97	17,5	13,0	1,5	10,5	(x)6M-045.33LF
	0,5-6,0	9,0	8,97	19,5	13,0	1,5	10,5	(x)6M-060.33LF
	4,0-9,0	9,0	8,97	22,5	13,0	1,5	10,5	(x)6M-090.61LF
M8	0,5-6,0	11,0	10,97	20,5	16,0	1,5	12,0	(x)8M-060.43LF
	0,5-8,0	11,0	10,97	23,0	16,0	1,5	12,0	(x)8M-080.47LF
	4,5-11,0	11,0	10,97	26,0	16,0	1,5	12,0	(x)8M-110.77LF
	6,5-13,0	11,0	10,97	28,0	16,0	1,5	12,0	(x)8M-130.97LF
M10	0,8-7,0	13,0	12,97	26,0	19,0	2,0	16,0	(x)10M-070.50LF
	1,5-10,0	13,0	12,97	30,0	19,0	2,0	16,0	(x)10M-100.60LF
	5,5-14,0	13,0	12,97	34,0	19,0	2,0	16,0	(x)10M-140.100LF
M12	1,0-8,0	16,0	15,97	31,0	23,0	2,0	19,0	(x)12M-080.50LF
	2,0-12,0	16,0	15,97	35,0	23,0	2,0	19,0	(x)12M-120.70LF
	8,0-18,0	16,0	15,97	41,0	23,0	2,0	19,0	(x)12M-180.130LF

All dimensions in metric. Steel Material Zinc Plating (A3K ISO4042 + thickness 8-12 micron Iridescent White Passivation (RoHS conform) high resistance (min 120h WR). Other coatings are available on request. Technical variations reserved.

BCT®- Multigrip

Offers a greatly extended grip capability compared to standard rivet nuts, allowing total versatility to the user. For class 8.8 bolt performance.

Large flange head

Round body knurled

Open end

Available in materials

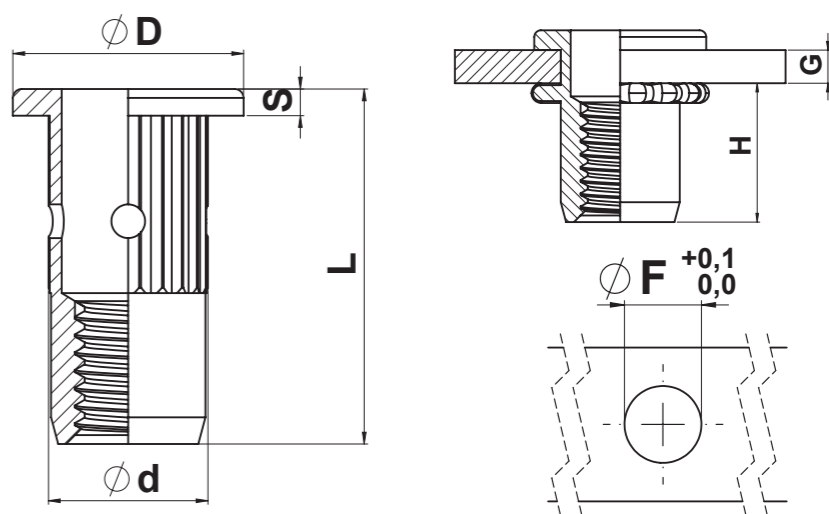
T = steel

E = stainless steel A2

V = stainless steel A4

A = aluminum

B = brass



Thread	Grip	ØF	ød	L	øD	S	H	Part number
M4	0,5-4,0	7,0	6,97	14,0	10,0	0,8	8,0	(x)4M-040.25LF/KN
	2,5-5,5	7,0	6,97	15,5	10,0	0,8	8,0	(x)4M-055.37LF/KN
	4,0-7,0	7,0	6,97	17,0	10,0	0,8	8,0	(x)4M-070.49LF/KN
M5	0,5-5,0	8,0	7,97	17,0	11,0	1,0	9,5	(x)5M-050.29LF/KN
	3,0-7,0	8,0	7,97	19,0	11,0	1,0	9,5	(x)5M-070.43LF/KN
M6	0,5-4,5	9,0	8,97	17,5	13,0	1,5	10,5	(x)6M-045.33LF/KN
	0,5-6,0	9,0	8,97	19,5	13,0	1,5	10,5	(x)6M-060.33LF/KN
	4,0-9,0	9,0	8,97	22,5	13,0	1,5	10,5	(x)6M-090.61LF/KN
M8	0,5-6,0	11,0	10,97	20,5	16,0	1,5	12,0	(x)8M-060.43LF/KN
	0,5-8,0	11,0	10,97	23,0	16,0	1,5	12,0	(x)8M-080.47LF/KN
	4,5-11,0	11,0	10,97	26,0	16,0	1,5	12,0	(x)8M-110.77LF/KN
	6,5-13,0	11,0	10,97	28,0	16,0	1,5	12,0	(x)8M-130.97LF/KN
M10	0,8-7,0	13,0	12,97	26,0	19,0	2,0	16,0	(x)10M-070.50LF/KN
	1,5-10,0	13,0	12,97	30,0	19,0	2,0	16,0	(x)10M-100.60LF/KN
	5,5-14,0	13,0	12,97	34,0	19,0	2,0	16,0	(x)10M-140.100LF/KN
M12	1,0-8,0	16,0	15,97	31,0	23,0	2,0	19,0	(x)12M-080.50LF/KN
	2,0-12,0	16,0	15,97	35,0	23,0	2,0	19,0	(x)12M-120.70LF/KN
	8,0-18,0	16,0	15,97	41,0	23,0	2,0	19,0	(x)12M-180.130LF/KN

All dimensions in metric. Steel Material Zinc Plating (A3K ISO4042 + thickness 8-12 micron Iridescent White Passivation (RoHS conform) high resistance (min 120h WR). Other coatings are available on request. Technical variations reserved.

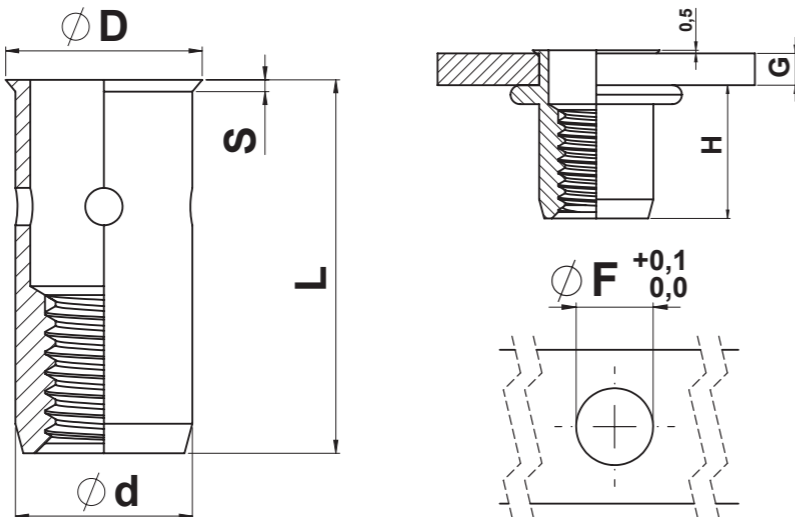
BCT®- Multigrip

Offers a greatly extended grip capability compared to standard rivet nuts, allowing total versatility to the user. For class 8.8 bolt performance.

Small countersunk head
Round body plain
Open end

Available in materials

T = steel
E = stainless steel A2
V = stainless steel A4
A = aluminum
B = brass



Thread	Grip	ØF	ød	L	øD	S	H	Part number
M4	0,5-4,0	7,0	6,97	13,5	8,0	0,5	8,0	(x)4M-040.25TS
	2,5-5,5	7,0	6,97	15,0	8,0	0,5	8,0	(x)4M-055.37TS
	4,0-7,0	7,0	6,97	16,5	8,0	0,5	8,0	(x)4M-070.49TS
M5	0,5-5,0	8,0	7,97	16,0	9,0	0,5	9,0	(x)5M-050.29TS
	3,0-7,0	8,0	7,97	18,0	9,0	0,5	9,0	(x)5M-070.43TS
M6	0,5-4,5	9,0	8,97	16,0	10,0	0,5	10,0	(x) 6M-045.33TS
	0,5-6,0	9,0	8,97	17,5	10,0	0,5	10,0	(x)6M-060.33TS
	4,0-9,0	9,0	8,97	21,0	10,0	0,5	10,0	(x)6M-090.61TS
M8	0,5-6,0	11,0	10,97	19,5	12,0	0,6	12,0	(x)8M-060.41TS
	0,5-8,0	11,0	10,97	21,5	12,0	0,6	12,0	(x)8M-080.45TS
	4,0-11,0	11,0	10,97	25,0	12,0	0,6	12,0	(x)8M-110.70TS
	6,5-13,0	11,0	10,97	27,0	12,0	0,6	12,0	(x)8M-130.88TS
M10	0,8-7,0	13,0	12,97	25,0	14,0	0,6	16,0	(x)10M-070.48TS
	1,5-10,0	13,0	12,97	28,0	14,0	0,6	16,0	(x)10M-100.58TS
	5,5-14,0	13,0	12,97	32,0	14,0	0,6	16,0	(x)10M-140.98TS
M12	1,0-8,0	16,0	15,97	30,0	17,2	0,65	19,0	(x)12M-080.50TS
	2,0-12,0	16,0	15,97	32,0	17,2	0,65	19,0	(x)12M-120.70TS
	8,0-18,0	16,0	15,97	38,0	17,2	0,65	19,0	(x)12M-180.130TS

All dimensions in metric. Steel Material Zinc Plating (A3K ISO4042 + thickness 8-12 micron Iridescent White Passivation (RoHS conform) high resistance (min 120h WR). Other coatings are available on request. Technical variations reserved.

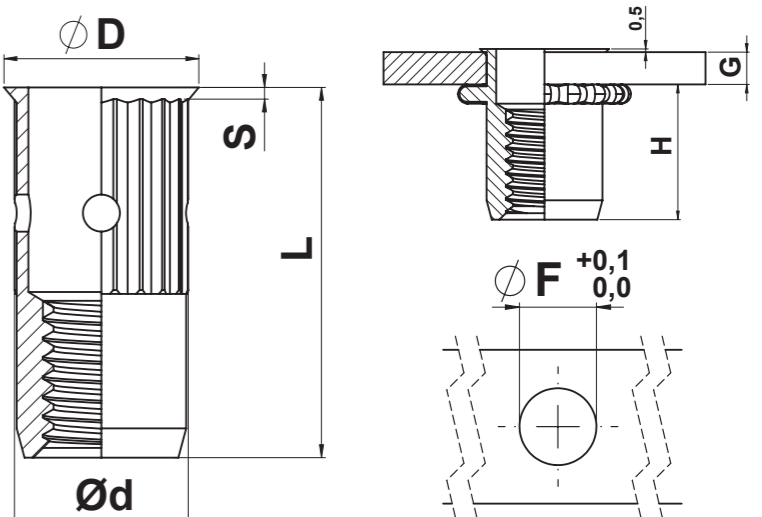
BCT®- Multigrip

Offers a greatly extended grip capability compared to standard rivet nuts, allowing total versatility to the user. For class 8.8 bolt performance.

Small countersunk head
Round body knurled
Open end

Available in materials

T = steel
E = stainless steel A2
V = stainless steel A4
A = aluminum
B = brass

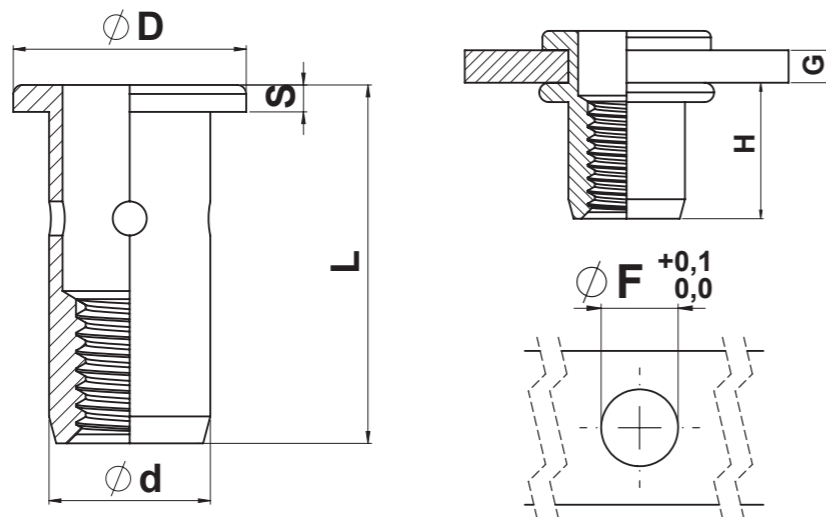


Thread	Grip	ØF	ød	L	øD	S	H	Part number
M4	0,5-4,0	7,0	6,97	13,5	8,0	0,5	8,0	(x)4M-040.25TS/KN
	2,5-5,5	7,0	6,97	15,0	8,0	0,5	8,0	(x)4M-055.37TS/KN
	4,0-7,0	7,0	6,97	16,5	8,0	0,5	8,0	(x)4M-070.49TS/KN
M5	0,5-5,0	8,0	7,97	16,0	9,0	0,5	9,0	(x)5M-050.29TS/KN
	3,0-7,0	8,0	7,97	18,0	9,0	0,5	9,0	(x)5M-070.43TS/KN
M6	0,5-4,5	9,0	8,97	16,0	10,0	0,5	10,0	(x)6M-045.33TS/KN
	0,5-6,0	9,0	8,97	17,5	10,0	0,5	10,0	(x)6M-060.33TS/KN
	4,0-9,0	9,0	8,97	21,0	10,0	0,5	10,0	(x)6M-090.61TS/KN
M8	0,5-6,0	11,0	10,97	19,5	12,0	0,6	12,0	(x)8M-060.41TS/KN
	0,5-8,0	11,0	10,97	21,5	12,0	0,6	12,0	(x)8M-080.45TS/KN
	4,0-11,0	11,0	10,97	25,0	12,0	0,6	12,0	(x)8M-110.70TS/KN
	6,5-13,0	11,0	10,97	27,0	12,0	0,6	12,0	(x)8M-130.88TS/KN
M10	0,8-7,0	13,0	12,97	25,0	14,0	0,6	16,0	(x)10M-070.48TS/KN
	1,5-10,0	13,0	12,97	28,0	14,0	0,6	16,0	(x)10M-100.58TS/KN
	5,5-14,0	13,0	12,97	32,0	14,0	0,6	16,0	(x)10M-140.98TS/KN
M12	1,0-8,0	16,0	15,97	30,0	17,2	0,65	19,0	(x)12M-080.50TS/KN
	2,0-12,0	16,0	15,97	32,0	17,2	0,65	19,0	(x)12M-120.70TS/KN
	8,0-18,0	16,0	15,97	38,0	17,2	0,65	19,0	(x)12M-180.130TS/KN

All dimensions in metric. Steel Material Zinc Plating (A3K ISO4042 + thickness 8-12 micron Iridescent White Passivation (RoHS conform) high resistance (min 120h WR). Other coatings are available on request. Technical variations reserved.

BCT®- High Strength

Provides product performance achieving tightening torque loads consistent with class 12.9 bolts.
Products retains pre tension of bolt, avoiding secondary tightening procedures.



Large flange head
Round body plain
Open end

Available in materials

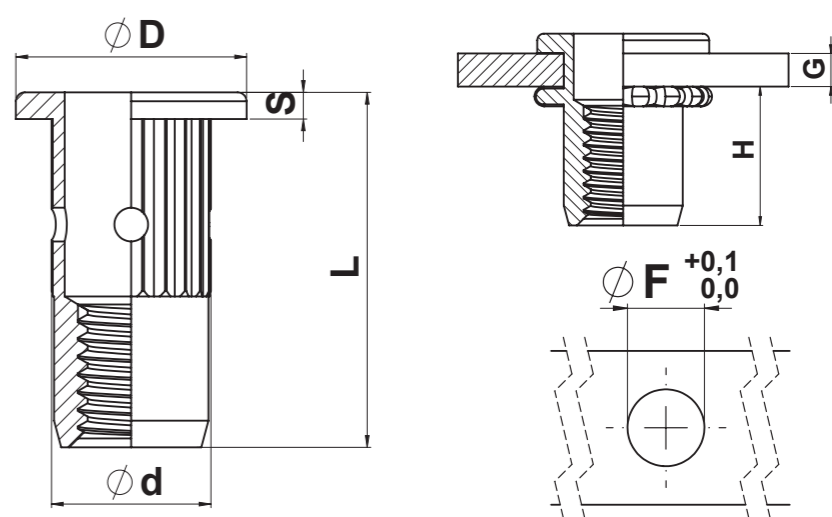
T = steel

Thread	Grip	ØF	ød	L	øD	S	H	Part number
M5	0,7-2,5	8,0	7,97	15,5	11,0	1,0	10,0	HT5M-25hLF
	2,5-4,0	8,0	7,97	17,0	11,0	1,0	10,5	HT5M-40hLF
M6	1,0-3,0	9,0	8,97	19,0	13,0	1,5	11,5	HT6M-30hLF
	3,0-5,0	9,0	8,97	21,0	13,0	1,5	11,5	HT6M-50hLF
	5,0-7,0	9,0	8,97	23,0	13,0	1,5	11,5	HT6M-70hLF
M8	1,5-4,0	11,0	10,97	23,0	16,0	1,5	14,0	HT8M-40hLF
	4,0-6,0	11,0	10,97	25,0	16,0	1,5	14,0	HT8M-60hLF
	6,0-8,0	11,0	10,97	27,0	16,0	1,5	14,0	HT8M-80hLF
M10	2,0-5,0	14,0	13,97	28,0	19,0	2,0	18,0	HT10M-50hLF
	4,5-7,0	14,0	13,97	30,0	19,0	2,0	18,0	HT10M-70hLF
	6,5-9,0	14,0	13,97	32,0	19,0	2,0	18,0	HT10M-90hLF

All dimensions in metric. Steel Material Zinc Plating (A3K ISO4042 + thickness 8-12 micron Iridescent White Passivation (RoHS conform) high resistance (min 120h WR). Other coatings are available on request. Technical variations reserved.

BCT®- High Strength

Provides product performance achieving tightening torque loads consistent with class 12.9 bolts.
Products retains pre tension of bolt, avoiding secondary tightening procedures.



Large flange head
Round body knurled
Open end

Available in materials

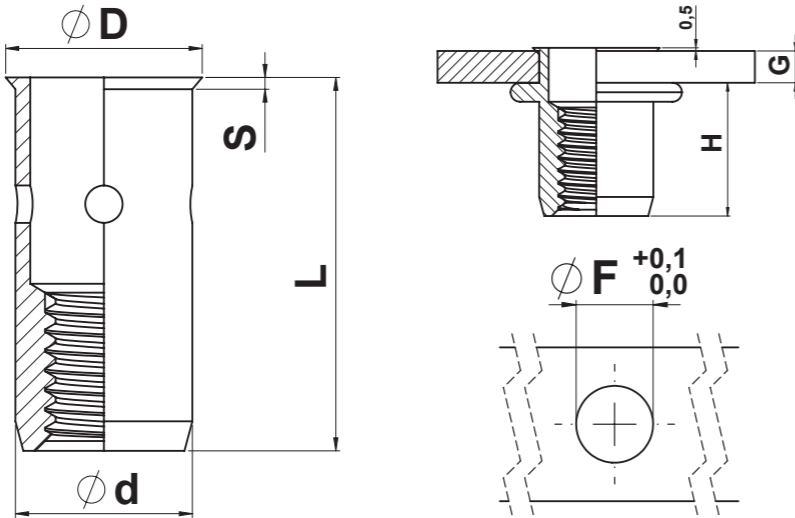
T = steel

Thread	Grip	ØF	ød	L	øD	S	H	Part number
M5	0,7-2,5	8,0	7,97	15,5	11,0	1,0	10,0	HT5M-25hLF/KN
	2,5-4,0	8,0	7,97	17,0	11,0	1,0	10,5	HT5M-40hLF/KN
M6	1,0-3,0	9,0	8,97	19,0	13,0	1,5	11,5	HT6M-30hLF/KN
	3,0-5,0	9,0	8,97	21,0	13,0	1,5	11,5	HT6M-50hLF/KN
	5,0-7,0	9,0	8,97	23,0	13,0	1,5	11,5	HT6M-70hLF/KN
M8	1,5-4,0	11,0	10,97	23,0	16,0	1,5	14,0	HT8M-40hLF/KN
	4,0-6,0	11,0	10,97	25,0	16,0	1,5	14,0	HT8M-60hLF/KN
	6,0-8,0	11,0	10,97	27,0	16,0	1,5	14,0	HT8M-80hLF/KN
M10	2,0-5,0	14,0	13,97	28,0	19,0	2,0	18,0	HT10M-50hLF/KN
	4,5-7,0	14,0	13,97	30,0	19,0	2,0	18,0	HT10M-70hLF/KN
	6,5-9,0	14,0	13,97	32,0	19,0	2,0	18,0	HT10M-90hLF/KN

All dimensions in metric. Steel Material Zinc Plating (A3K ISO4042 + thickness 8-12 micron Iridescent White Passivation (RoHS conform) high resistance (min 120h WR). Other coatings are available on request. Technical variations reserved.

BCT®- High Strength

Provides product performance achieving tightening torque loads consistent with class 12.9 bolts.
Products retains pre tension of bolt, avoiding secondary tightening procedures.



Small countersunk head

Round body plain

Open end

Available in materials

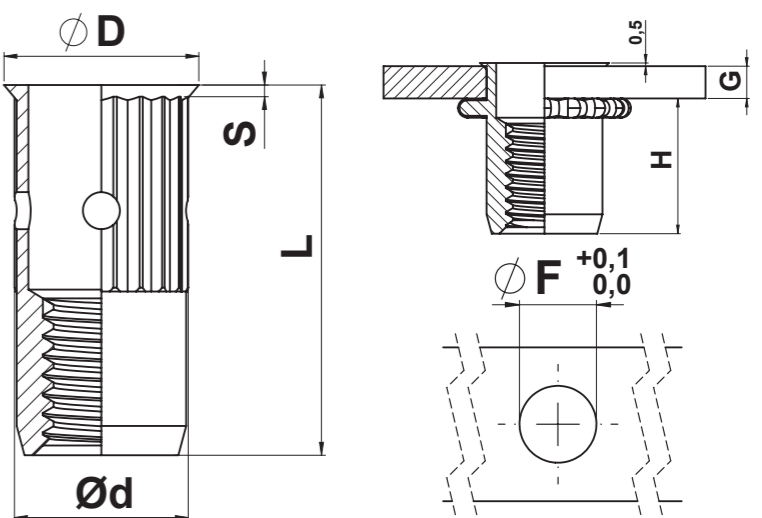
T = steel

Thread	Grip	$\varnothing F$	$\varnothing d$	L	$\varnothing D$	S	H	Part number
M5	0,7-2,5	8,0	7,97	15,0	9,0	0,5	9,5	HT5M-25hTS
	2,5-4,0	8,0	7,97	16,5	9,0	0,5	9,0	HT5M-40hTS
M6	1,0-3,0	9,0	8,97	18,0	10,0	0,5	11,0	HT6M-30hTS
	3,0-5,0	9,0	8,97	20,0	10,0	0,5	11,0	HT6M-50hTS
	5,0-7,0	9,0	8,97	22,0	10,0	0,5	11,0	HT6M-70hTS
M8	1,5-4,0	11,0	10,97	22,0	12,0	0,60	13,5	HT8M-40hTS
	4,0-6,0	11,0	10,97	24,0	12,0	0,60	13,5	HT8M-60hTS
	6,0-8,0	11,0	10,97	26,0	12,0	0,60	13,5	HT8M-80hTS
M10	2,0-5,0	14,0	13,97	27,0	15,0	0,60	18,0	HT10M-50hTS
	4,5-7,0	14,0	13,97	29,0	15,0	0,60	18,0	HT10M-70hTS
	6,5-9,0	14,0	13,97	31,0	15,0	0,60	18,0	HT10M-90hTS

All dimensions in metric. Steel Material Zinc Plating (A3K ISO4042 + thickness 8-12 micron Iridescent White Passivation (RoHS conform) high resistance (min 120h WR). Other coatings are available on request. Technical variations reserved.

BCT®- High Strength

Provides product performance achieving tightening torque loads consistent with class 12.9 bolts.
Products retains pre tension of bolt, avoiding secondary tightening procedures.



Small countersunk head

Round body knurled

Open end

Available in materials

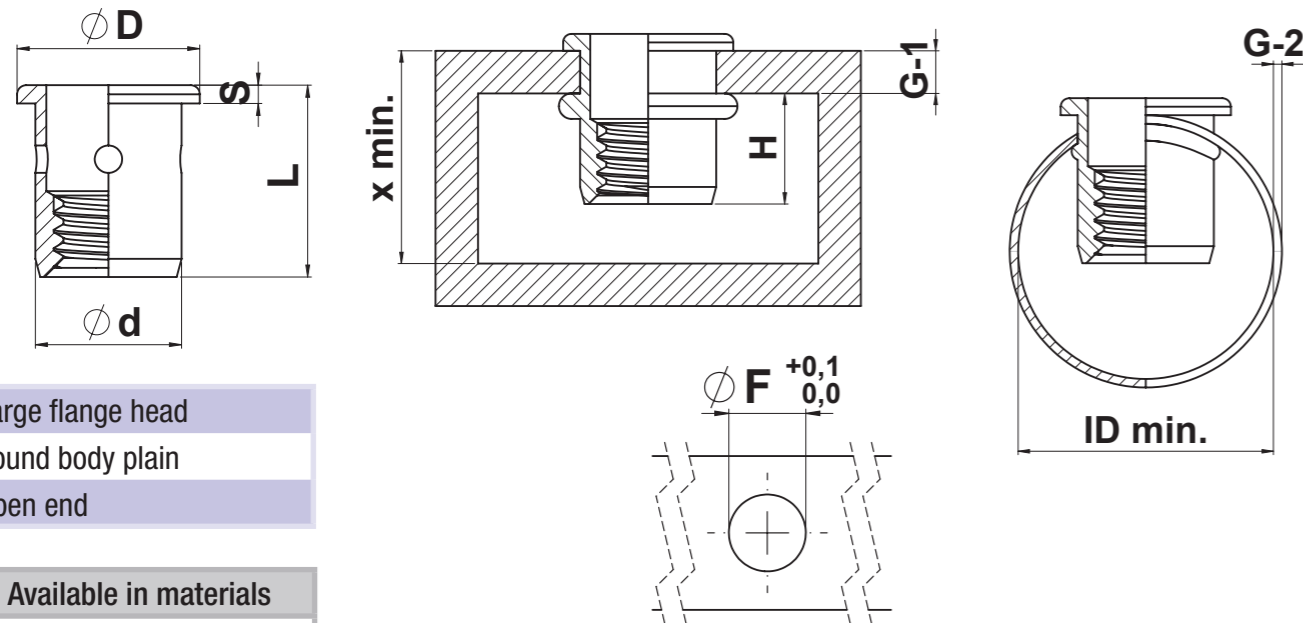
T = steel

Thread	Grip	$\varnothing F$	$\varnothing d$	L	$\varnothing D$	S	H	Part number
M5	0,7-2,5	8,0	7,97	15,0	9,0	0,5	9,5	HT5M-25hTS/KN
	2,5-4,0	8,0	7,97	16,5	9,0	0,5	9,0	HT5M-40hTS/KN
M6	1,0-3,0	9,0	8,97	18,0	10,0	0,5	11,0	HT6M-30hTS/KN
	3,0-5,0	9,0	8,97	20,0	10,0	0,5	11,0	HT6M-50hTS/KN
	5,0-7,0	9,0	8,97	22,0	10,0	0,5	11,0	HT6M-70hTS/KN
M8	1,5-4,0	11,0	10,97	22,0	12,0	0,60	13,5	HT8M-40hTS/KN
	4,0-6,0	11,0	10,97	24,0	12,0	0,60	13,5	HT8M-60hTS/KN
	6,0-8,0	11,0	10,97	26,0	12,0	0,60	13,5	HT8M-80hTS/KN
M10	2,0-5,0	14,0	13,97	27,0	15,0	0,60	18,0	HT10M-50hTS/KN
	4,5-7,0	14,0	13,97	29,0	15,0	0,60	18,0	HT10M-70hTS/KN
	6,5-9,0	14,0	13,97	31,0	15,0	0,60	18,0	HT10M-90hTS/KN

All dimensions in metric. Steel Material Zinc Plating (A3K ISO4042 + thickness 8-12 micron Iridescent White Passivation (RoHS conform) high resistance (min 120h WR). Other coatings are available on request. Technical variations reserved.

BCT®- Micro

For use in areas where there is restricted rear sheet clearance (before or after installation), while still offering product performance consistent with class 8.8 bolts.
Can be used in sheet material, box section and also tube.



Large flange head
Round body plain
Open end

Available in materials

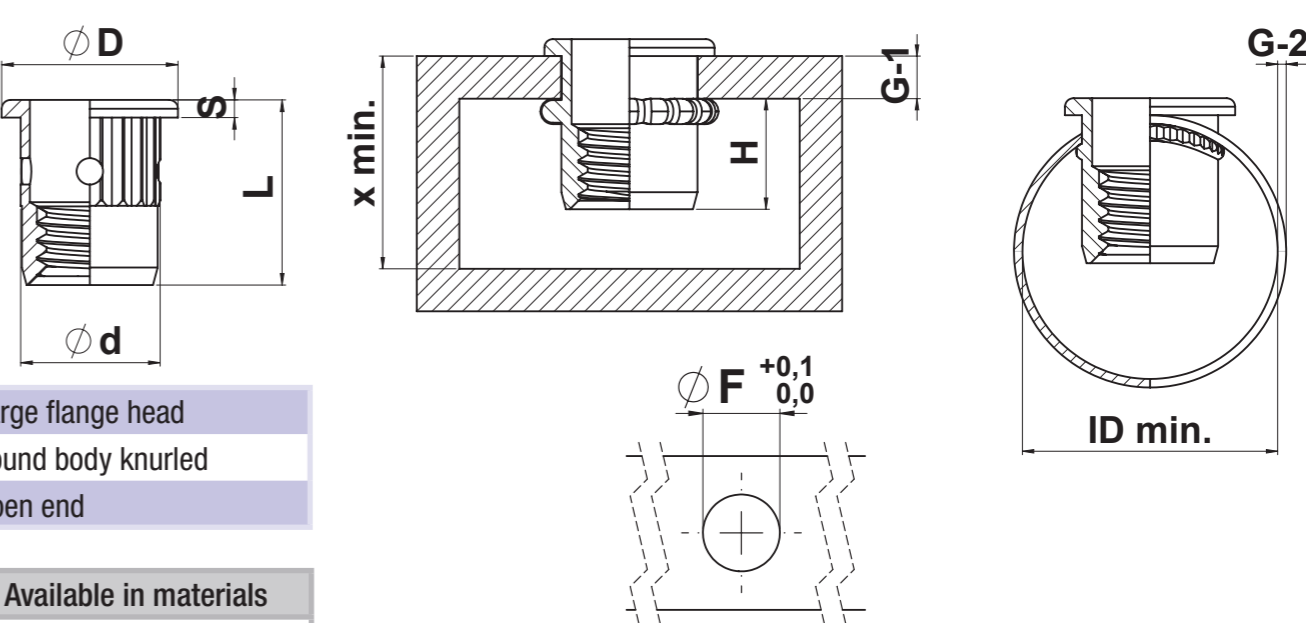
T = steel

Thread	Profile			Tube							
	Grip 1	x	H ca.	Grip 2	ID	ØF	Ød	L	ØD	S	Part number
M4	0,5-0,8	6,2	4,2	0,3-0,8	8,5	6,0	5,97	8,0	8,0	0,7	T4M-01sLF
	-1,8	7,2	4,2								
	1,5-2,0	7,4	4,2	0,8-1,5	8,5	6,0	5,97	8,7	8,0	0,7	T4M-02sLF
	-2,5	7,9	4,2								
M5	0,7-1,0	7,4	5,0	0,5-1,0	10,0	7,0	6,97	9,5	9,0	0,9	T5M-01sLF
	-2,0	8,4	5,0								
	2,0-2,5	9,0	5,0	1,0-2,0	10,0	7,0	6,97	10,5	9,0	0,9	T5M-02sLF
	-3,0	9,5	5,0								
M6	0,7-1,0	8,5	6,0	0,5-1,0	12,0	8,0	7,97	10,5	10,0	1,0	T6M-01sLF
	-2,0	9,5	6,0								
	2,0-2,5	10,0	6,0	1,0-2,0	12,0	8,0	7,97	11,5	10,0	1,0	T6M-02sLF
	-3,0	10,5	6,0								
M8	1,5-2,5	11,0	7,5	0,5-1,2	18,0	10,0	9,97	13,0	13,0	1,2	T8M-01sLF
	-3,0	11,5	7,5								
	3,0-4,0	12,5	7,5	1,0-2,5	18,0	10,0	9,97	14,5	13,0	1,2	T8M-02sLF
	-4,5	13,0	7,5								
	4,5-5,5	14,0	7,5	2,0-4,0	18,0	10,0	9,97	16,0	13,0	1,2	T8M-03sLF
	-6,0	14,5	7,5								

All dimensions in metric. Steel Material Zinc Plating (A3K ISO4042 + thickness 8-12 micron Iridescent White Passivation (RoHS conform) high resistance (min 120h WR). Other coatings are available on request. Technical variations reserved.

BCT®- Micro

For use in areas where there is restricted rear sheet clearance (before or after installation), while still offering product performance consistent with class 8.8 bolts.
Can be used in sheet material, box section and also tube.



Large flange head
Round body knurled
Open end

Available in materials

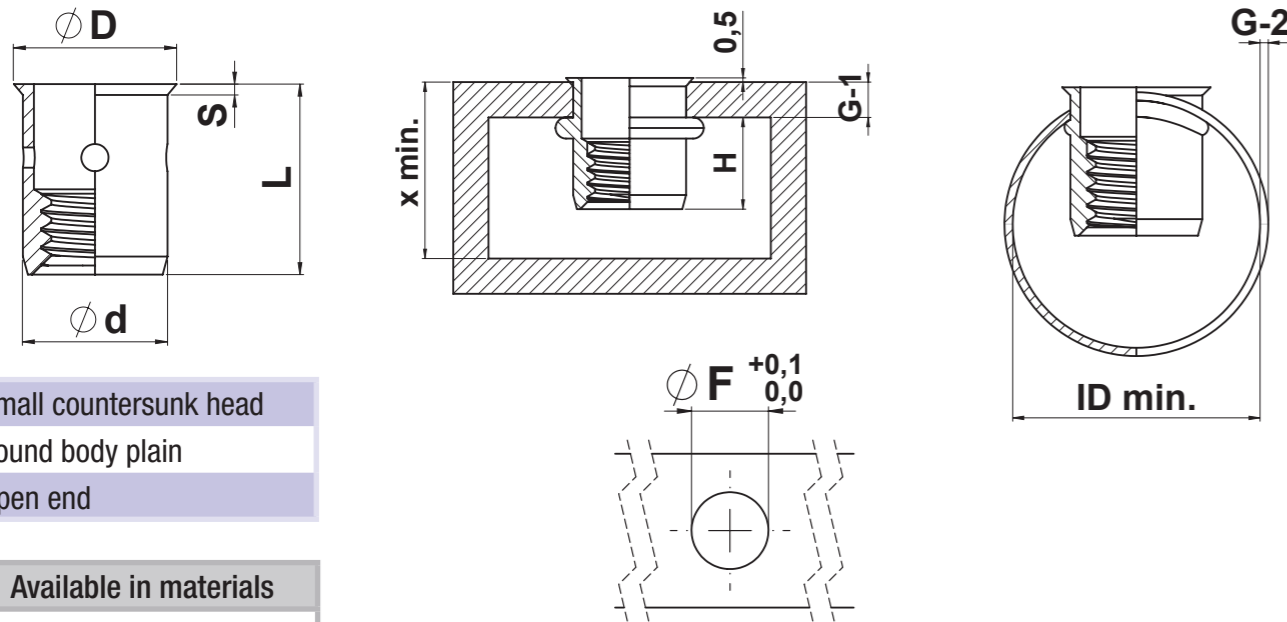
T = steel

Thread	Profile			Tube							
	Grip 1	x	H ca.	Grip 2	ID	ØF	Ød	L	ØD	S	Part number
M4	0,5-0,8	6,2	4,2	0,3-0,8	8,5	6,0	5,97	8,0	8,0	0,7	T4M-01sLF/KN
	-1,8	7,2	4,2								
	1,5-2,0	7,4	4,2	0,8-1,5	8,5	6,0	5,97	8,7	8,0	0,7	T4M-02sLF/KN
	-2,5	7,9	4,2								
M5	0,7-1,0	7,4	5,0	0,5-1,0	10,0	7,0	6,97	9,5	9,0	0,9	T5M-01sLF/KN
	-2,0	8,4	5,0								
	2,0-2,5	9,0	5,0	1,0-2,0	10,0	7,0	6,97	10,5	9,0	0,9	T5M-02sLF/KN
	-3,0	9,5	5,0								
M6	0,7-1,0	8,5	6,0	0,5-1,0	12,0	8,0	7,97	10,5	10,0	1,0	T6M-01sLF/KN
	-2,0	9,5	6,0								
	2,0-2,5	10,0	6,0	1,0-2,0	12,0	8,0	7,97	11,5	10,0	1,0	T6M-02sLF/KN
	-3,0	10,5	6,0								
M8	1,5-2,5	11,0	7,5	0,5-1,2	18,0	10,0	9,97	13,0	13,0	1,2	T8M-01sLF/KN
	-3,0	11,5	7,5								
	3,0-4,0	12,5	7,5	1,0-2,5	18,0	10,0	9,97	14,5	13,0	1,2	T8M-02sLF/KN
	-4,5	13,0	7,5								
	4,5-5,5	14,0	7,5	2,0-4,0	18,0	10,0	9,97	16,0	13,0	1,2	T8M-03sLF/KN
	-6,0	14,5	7,5								

All dimensions in metric. Steel Material Zinc Plating (A3K ISO4042 + thickness 8-12 micron Iridescent White Passivation (RoHS conform) high resistance (min 120h WR). Other coatings are available on request. Technical variations reserved.

BCT®- Micro

For use in areas where there is restricted rear sheet clearance (before or after installation), while still offering product performance consistent with class 8.8 bolts.
Can be used in sheet material, box section and also tube.



Small countersunk head
Round body plain
Open end

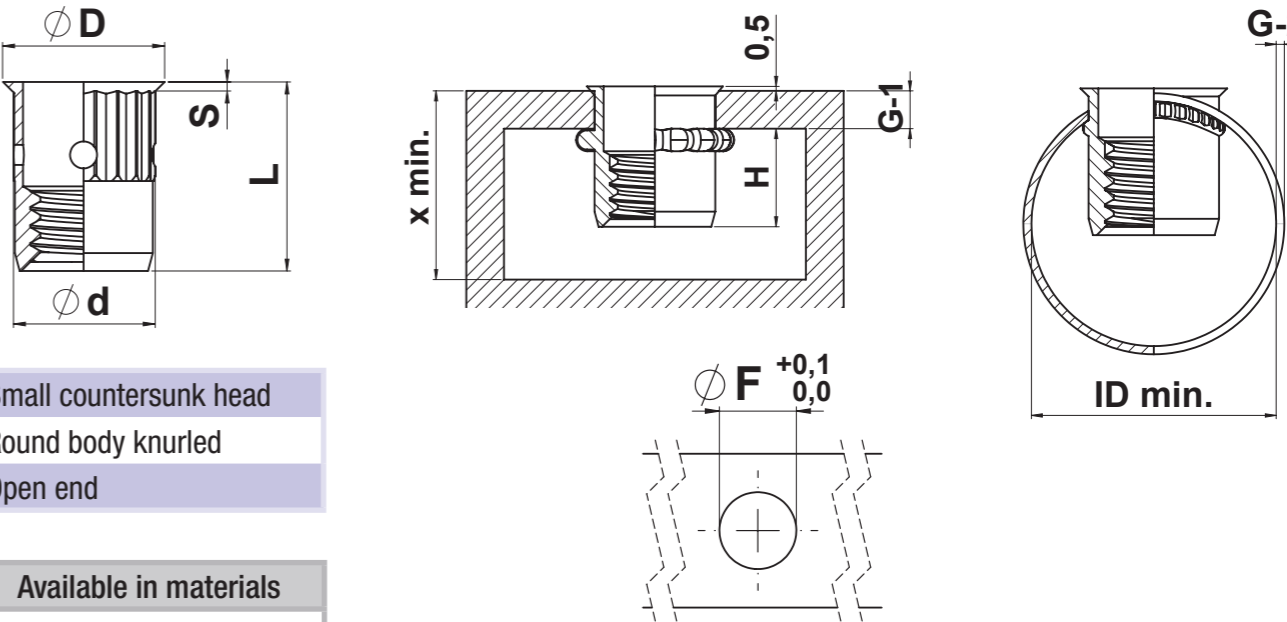
Available in materials
T = steel

Thread	Profile			Tube							
	Grip 1	x	H ca.	Grip 2	ID	ØF	ød	L	øD	S	Part number
M4	0,5-0,8	6,2	4,2	0,3-0,8	8,5	6,0	5,97	7,8	7,0	0,5	T4M-01sTS
	-1,8	7,2	4,2								
	1,5-2,0	7,4	4,2	0,8-1,5	8,5	6,0	5,97	8,5	7,0	0,5	T4M-02sTS
	-2,5	7,9	4,2								
M5	0,7-1,0	7,4	5,0	0,5-1,0	10,0	7,0	6,97	9,0	8,0	0,5	T5M-01sTS
	-2,0	8,4	5,0								
	2,0-2,5	9,0	5,0	1,0-2,0	10,0	7,0	6,97	10,0	8,0	0,5	T5M-02sTS
	-3,0	9,5	5,0								
M6	0,7-1,0	8,5	6,0	0,5-1,0	12,0	8,0	7,97	10,0	9,0	0,6	T6M-01sTS
	-2,0	9,5	6,0								
	2,0-2,5	10,0	6,0	1,0-2,0	12,0	8,0	7,97	11,0	9,0	0,6	T6M-02sTS
	-3,0	10,5	6,0								
M8	1,5-2,5	11,0	7,5	0,5-1,2	18,0	10,0	9,97	12,5	11,0	0,6	T8M-01sTS
	-3,0	11,5	7,5								
	3,0-4,0	12,5	7,5	1,0-2,5	18,0	10,0	9,97	14,0	11,0	0,6	T8M-02sTS
	-4,5	13,0	7,5								
	4,5-5,5	14,0	7,5	2,0-4,0	18,0	10,0	9,97	15,5	11,0	0,6	T8M-03sTS
	-6,0	14,5	7,5								

All dimensions in metric. Steel Material Zinc Plating (A3K ISO4042 + thickness 8-12 micron Iridescent White Passivation (RoHS conform) high resistance (min 120h WR). Other coatings are available on request. Technical variations reserved.

BCT®- Micro

For use in areas where there is restricted rear sheet clearance (before or after installation), while still offering product performance consistent with class 8.8 bolts.
Can be used in sheet material, box section and also tube.



Small countersunk head
Round body knurled
Open end

Available in materials
T = steel

Thread	Profile			Tube							
	Grip 1	x	H ca.	Grip 2	ID	ØF	ød	L	øD	S	Part number
M4	0,5-0,8	6,2	4,2	0,3-0,8	8,5	6,0	5,97	7,8	7,0	0,5	T4M-01sTS/KN
	-1,8	7,2	4,2								
	1,5-2,0	7,4	4,2	0,8-1,5	8,5	6,0	5,97	8,5	7,0	0,5	T4M-02sTS/KN
	-2,5	7,9	4,2								
M5	0,7-1,0	7,4	5,0	0,5-1,0	10,0	7,0	6,97	9,0	8,0	0,5	T5M-01sTS/KN
	-2,0	8,4	5,0								
	2,0-2,5	9,0	5,0	1,0-2,0	10,0	7,0	6,97	10,0	8,0	0,5	T5M-02sTS/KN
	-3,0	9,5	5,0								
M6	0,7-1,0	8,5	6,0	0,5-1,0	12,0	8,0	7,97	10,0	9,0	0,6	T6M-01sTS/KN
	-2,0	9,5	6,0								
	2,0-2,5	10,0	6,0	1,0-2,0	12,0	8,0	7,97	11,0	9,0	0,6	T6M-02sTS/KN
	-3,0	10,5	6,0								
M8	1,5-2,5	11,0	7,5	0,5-1,2	18,0	10,0	9,97	12,5	11,0	0,6	T8M-01sTS/KN
	-3,0	11,5	7,5								
	3,0-4,0	12,5	7,5	1,0-2,5	18,0	10,0	9,97	14,0	11,0	0,6	T8M-02sTS/KN
	-4,5	13,0	7,5								
	4,5-5,5	14,0	7,5	2,0-4,0	18,0	10,0	9,97	15,5	11,0	0,6	T8M-03sTS/KN
	-6,0	14,5	7,5								

All dimensions in metric. Steel Material Zinc Plating (A3K ISO4042 + thickness 8-12 micron Iridescent White Passivation (RoHS conform) high resistance (min 120h WR). Other coatings are available on request. Technical variations reserved.

